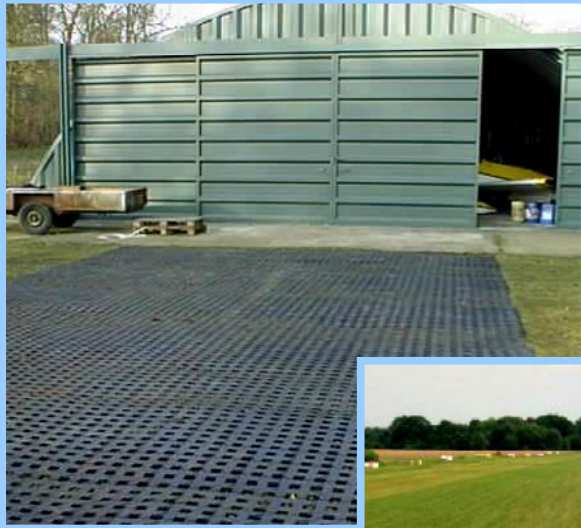


PERFO

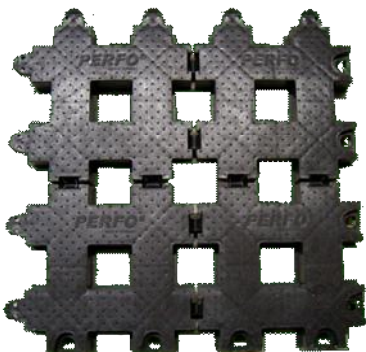
S2T GRASS
REINFORCEMENT

PERFO

Reinforcement for soft
ground on airfields



Contact:



S2T Grass Reinforcement

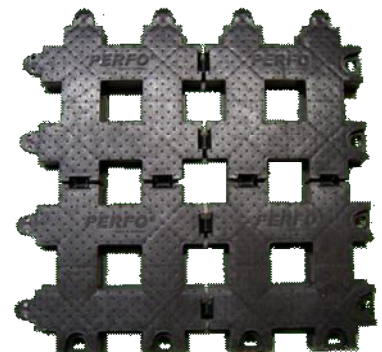
Im Holderbett 31
D-73773 Aichwald
Germany

Tel. +49 (0)711 3650252

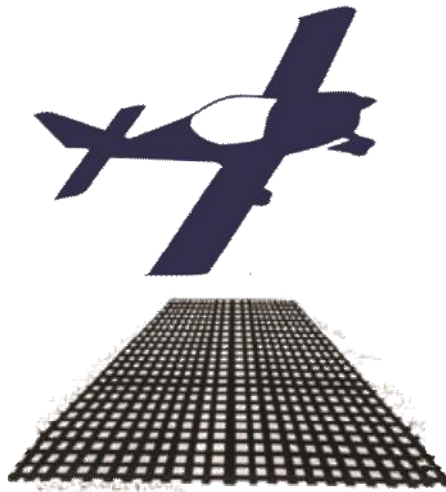
Fax +49 (0)711 3650253

info@s2t-perfo.com

www.s2t-perfo.com



PERFO



PERFO

Ideal for providing a firm surface on grass runways, taxiways, helipads and parking areas

Easy to install in 3 simple steps

- durable, all weather surface prevents rutting
- increased flying season and revenue
- safer, more secure take-off and landing surface
- secure interlocking tiles prevent standing edges
- tiles do not rot, UV and frost resistant
- grass grows back through the tiles within weeks, preserving the character of grass airstrips
- tiles allow water to pass through them. Natural drainage maintained
- planning permission not normally required
- self-anchoring – no additional materials or fixing required
- airfield's own labour force can install the system in a short time
- tiled matting can normally be rolled or pressed into unprepared soft grass surface
- tiles can be removed later, if required
- low cost when compared to alternative surfacing options



Transforms soft ground into a stable base



Grass grows back through the tiles

See www.perfo.co.uk for further details

or contact

S2T Grass Reinforcement

125 High Road, North Weald

Epping, Essex, CM16 6EA

United Kingdom

Tel. +44 (0)1992 522 797

Fax +44 (0)1992 610 725

info@perfo.co.uk

